



High Quality DAC SNR 110dB  
Multi-media 5.1 channel USB SoundCard

# MAYA U5



**EnvyUSB USB2.0 FS Audio Controller**

- 5.1 channel Surround
- Headphone Amplifier
- Optical In/Out
- AC3 Pass Through
- QSOUND (Windows 7/Vista)
- Stereo Mix
- Anti Pop Circuit

User's Guide

マニュアル

사용 설명서



본 설명서는 자이로컴씨앤씨(주)가 모든 저작권을 가지므로 내용 중 일부라도 복제하는 것은 금지되어 있습니다.

본 설명서에 기록된 제품의 성능이나 사용방법은 제품의 성능 향상을 위해 예고 없이 변경될 수 있습니다.

● 홈페이지 : <http://www.audiotrack.co.kr/>

● 고객센터 : 인천광역시 남구 주안동 17-1 주안시범공단 공장동 640호 ● 전화번호 : 032-876-9420 , 9421

Since only GYROCOM C&C Co., LTD. holds the copyright, this manual may not be copied or photocopied, in whole or in part. In order to improve performance, the contents of this manual including the capabilities and the ways to use the product is subject to change without notice.

本書の著作権はGYROCOM C&C Co., LTD.に帰属します。本書の一部あるいは全部をGYROCOM C&C Co., LTD.から書面による事前の許諾を得ることなく複写複製(コピー)することを禁じます。

本書に表示された製品の機能または規格は、性能向上のために予告なしに変更されることがあります。

**AUDIOTRAK®** **GYROCOM**

B급 기기(가정용 방송통신기기)

이 기기는 가정용으로 전자파 적합 등록을 한 기기로써 주로 가정에서 사용하는 것을 목적으로 하며, 모든 지역에서 사용할 수 있습니다.



1. 기기의 명칭(모델명) : MAYA U5
2. 인증번호 : KCC-REM-GYRMAYAU5(B)
3. 인증받은자의 상호 : 자이로컴씨앤씨(주)
4. 제조자/제조국가 : 자이로컴씨앤씨(주)/한국

## FCC Statement

Note: This equipment has been tested and found to comply with the limits for a Class B digital device, pursuant to part 15 of the FCC Rules. These limits are designed to provide reasonable protection against harmful interference in a residential installation. This equipment generates, uses and can radiate radio frequency energy and, if not installed and used in accordance with the instructions, may cause harmful interference to radio communications. However, there is no guarantee that interference will not occur in a particular installation. If this equipment does cause harmful interference to radio or television reception, which can be determined by turning the equipment off and on, the user is encouraged to try to correct the interference by one or more of the following measures:

- Reorient or relocate the receiving antenna.
- Increase the separation between the equipment and receiver.
- Connect the equipment into an outlet on a circuit different from that to which the receiver is connected.
- Consult the dealer or an experienced radio/TV technician for help.

Modifications not expressly approved by the manufacturer could void the user's authority to operate the equipment under FCC rules.

|    |  |
|----|--|
| 2  | <b>Safety Cautions</b>                             |
| 3  | <b>Chapter 1 Product Introduction</b>              |
| 3  | Product Introduction                               |
| 4  | Package Contents                                   |
| 5  | <b>Chapter 2 Description of Connectors</b>         |
| 6  | <b>Chapter 3 Hook-up Application</b>               |
| 7  | <b>Chapter 4 Driver Installation</b>               |
| 7  | Installation of the Driver                         |
| 9  | Deleting the Driver                                |
| 10 | <b>Chapter 5 Description of Control Panel Menu</b> |
| 10 | Windows VISTA/ 7 Control Panel Menu                |
| 16 | Windows XP Control Panel Menu                      |
| 19 | When using MAYA U5 with Mac OS X                   |
| 20 | <b>Cautions to Use</b>                             |
| 21 | <b>System Requirements / Specification</b>         |
| 22 | <b>Supplement : Service Guide</b>                  |

# Safety Cautions

Safety cautions should be complied with for preventing accidents or damage to properties.



## Warning

The contents means possibility of death or serious injuries.



## Caution

The content means possibility of injuries or physical damage.



The content means prohibition.



The content means to prohibit contact.



The content means to prohibit disassembly.



The content means must do's.



The content means to unplug a power plug from a socket.



## Warning



Do not disassemble/repair/modify

Possible malfunctions may cause fire or electric shock.



If you smell or hear something wired from the product, turn off the power and unplug the power plug before calling us.



Do not let metallic material or liquid in the product.

This may cause failure or fire on the product or electric shock.



Do not use the product if it is broken.

If the product is broken, it may cause severe damage to the system, fire, and electric shock.



## Caution



Avoid directly facing a beam lit from the Optical-Out for preventing damage to vision.



Slide up the output volume bit by bit from min to max for appropriate volume control.

Excessively high volume may cause negative influence on your auditory functions.



Do not forcibly fold or pull the connection cable and other cables.

This may cause failure or fire on the Product or electric shock.



Turn off the computer and disconnect the power plug for installation.

# Product Introduction

Thank you for purchasing MAYA U5.

MAYA U5 is the versatile and plug-and-play 5.1 channel USB sound card for multimedia, having advantage of light weight, black compact size and convenient portability.

## **Windows Basic Driver and VIA exclusive Driver are usable**

By only connecting USB with desktop, notebook, netbook and etc, basic driver will be installed automatically in Windows and MAC OS X, and you can use MAYA U5 conveniently. In addition, you can get various sound effects and get easy control of sound control on the driver panel when included MAYA U5 exclusive driver for Windows is installed.

## **High Performance Audio Controller and Codec Chip are mounted / Stable Board Design**

VIA's High performance EnvyUSB USB2.0 FS audio controller used for high-end sound card and high quality High Definition audio codec(DAC SNR 110dB) are mounted. Further, outstanding stability and high quality sound is achieved by mounting the exclusive super-low noise constant voltage regulator on the codec, which is one of the most important parts for quality of the sound, by perfect ground-separate design between digital and analog and by using high quality parts guaranteeing safety.

## **Support various speakers and Built-in Headphone Amplifier of High Power Output and High Quality Sound**

Despite the small size, it supports such various speakers as analog 2-Channel (2.1CH), 4-Channel, 5.1-Channel and digital speakers. Furthermore, you can get sufficient sound volume and don't need additional external headphone amplifier even when using high impedance headphone of around 150 Ω because high performance headphone amplifier is in-built in the headphone terminal area.

## **Support QSound and Stereo Expander Function**

By built-in world famous stereo sound technology, Qsound, you can enjoy ample stereo sound when listening to music and watching movies. And it supports EQ control to fill the insufficient sound with your own speaker. (QSound feature is supported only with Vista and Windows 7).

And Stereo Expander function(channel expansion feature) enables 2 channel sound source to be expanded to 5.1 channel.(Only in case of analog output)

# Product Introduction

## **Support High Performance Microphone input(+30dB amplification feature) and Stereo Mix Function**

By supporting high performance microphone input, it can record your voice clearly with sufficient sound volume. And by built-in stereo mix feature, it can support internet broadcast through mixing microphone, line-in input and internal playback sound and can record any sound like internet blog sound clearly.

## **Support Digital Input/Output(adopting optical terminal)**

By supporting optical output terminal, it can be used in connection with receiver, home theater, digital speaker and etc. and can record digital output of digital output-enabled audio equipments without loss through digital input terminal. In addition, it can record internal playback sound without loss if you connect optical input/output terminals with optical fiber cable.

## **Support Blu-ray and HD DVD Audio content Protection Function**

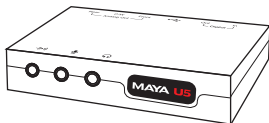
It can playback Blu-ray and HD DVD Audio source at 24bit/48kHz.

※ You need the Blue Ray ROM Drive and a program like the Power DVD that plays source to use the Blu Ray on the Computer.

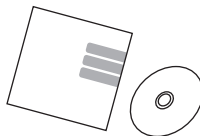
## **Motion LED and Pop-Noise Cancellation Circuit is mounted.**

Smoothly blinking red LED in playback is mounted to know the device is in work. Unnecessary noise at the time of ON/OFF is suppressed by mounted pop-noise cancellation circuit.

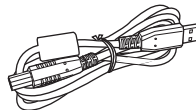
## **■ Package Contents**



\*MAYA U5

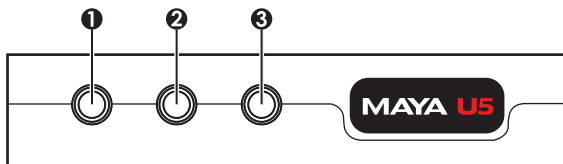


\*User's Guide & Installation CD

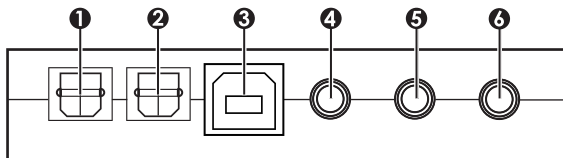


\*USB cable (A to B type, 1.5M)

# Description of Connectors

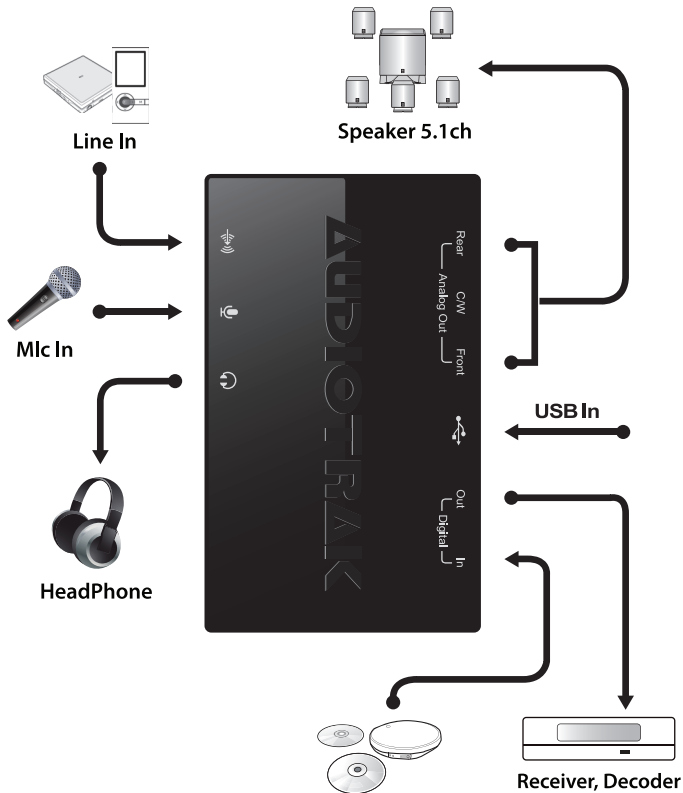


- ① **Line In** : This is Input terminal to get input of stereo signal from audio equipment like CD player or MP3 player mixer,
- ② **Mic In** : This is mono signal input terminal from microphone,
- ③ **Headphone output Terminal** : This is the terminal to be used connecting with headphone,



- ① **Digital In** : Input terminal of digital signal (Only PCM type audio stereo signal is recognized, DTS, AC3 5,1 channel signal is not recognized)
- ② **Digital Out** : Output terminal of digital signal, (You need to set up PassThrough with the video software when you make AC3,DTS 5,1 channel digital signal output, You can get more information for set-up on the FAQ page of our website,)
- ③ **USB Connection Terminal** : USB connection terminal, (It is directly connected to the USB in the main equipment for stable power supply.)
- ④ **Front** : Output terminal of front speaker,
- ⑤ **C/W** : Output terminal in the central speaker and woofer speaker,
- ⑥ **REAR** : Output terminal of rear speaker,

# Hook-up Application





# Driver Installation

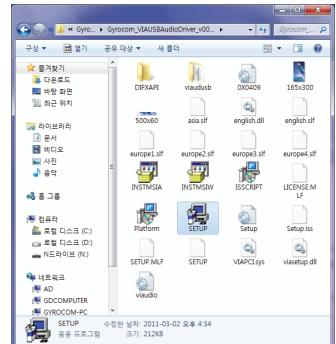
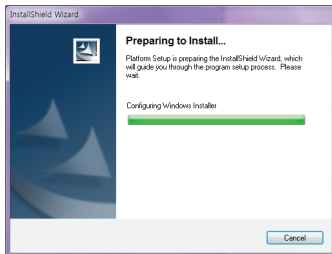
## 1. Connection of the Product

Connect enclosed USB cable with MAYA U5 USB terminal and PC and notebook USB terminal. After connection, “MAYA U5” is shown on the windows if it is recognized. With the PC used by several people, you can enjoy music and use microphone without installing driver. (When internal sound card is used, it is set as a default sound card. So MAYA U5 may not work. In that case, you need to check default sound output device set-up in the sound menu of control panel.)

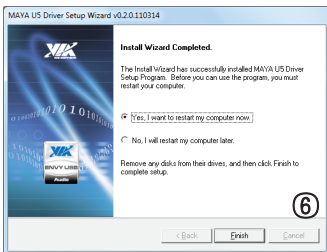
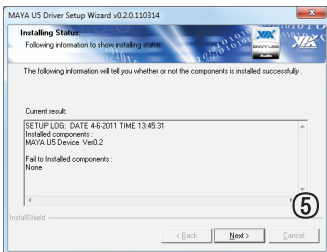
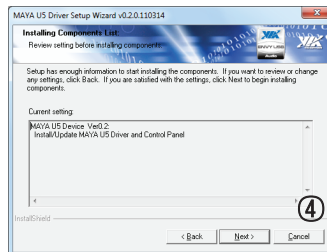
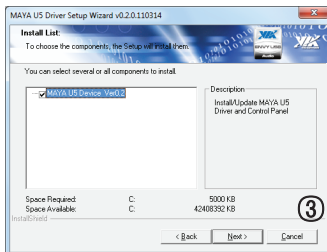
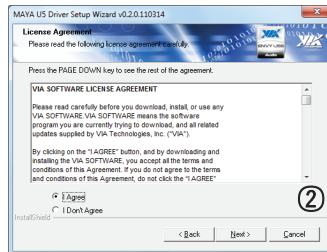
## 2. Installation of Driver (for Windows)

Insert the enclosed CD into CDROM and run Setup.exe in the MAYA U5 folder. (In case you lose driver CD, you can download it in Driver Download on our website [www.audiotrack.net](http://www.audiotrack.net) ) (\*\*If you install the driver, you can use such features as QSound, Stereo Expander and AC3 Pass Through. But it needs more system resource. So we recommend you to use MAYA U5 without driver installation if you do not need those functions. \*\*)

Please install the driver as per the below pictures and re-boot your computer after installation.



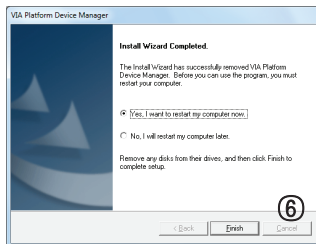
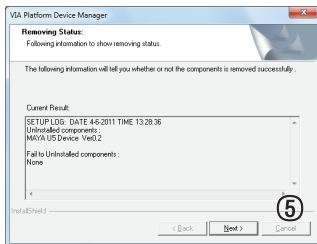
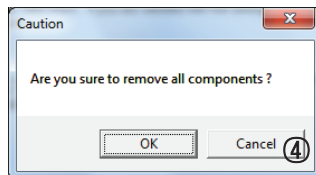
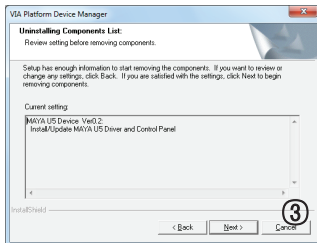
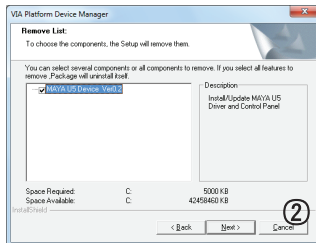
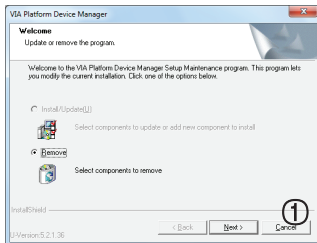
# Driver Installation



# Driver Installation

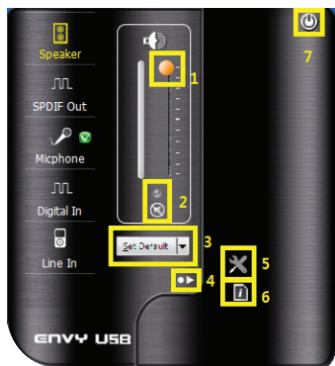
## 3. Deleting the Driver (for Windows)

You can delete the driver by running Setup.exe or running VIA Platform Device Manager in Control => Program, Please follow the below pictures for deleting.

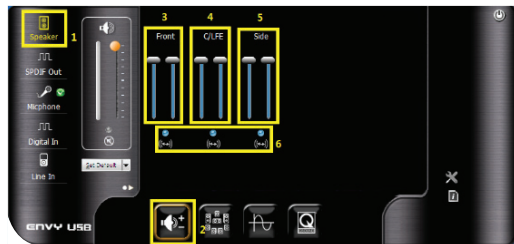


# Description of Control Panel Menu

[Menu description of Control Panel when using Windows VISTA, 7 ]

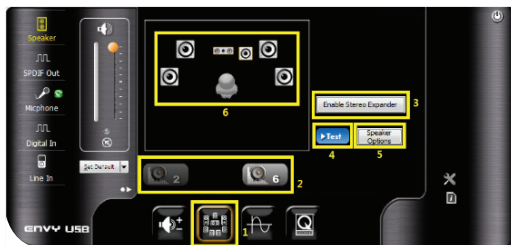


1. **Master Volume Control** : Control the whole volume
2. **Master Sound Mute** : You can mute the whole sound volume by checking this,
3. **Set Default** : You can change the set-up of basic input, output devices or basic communication device. (After selecting the device, click Set Default for setting up basic communication devices)
4. Menu is shown by opening panel to the right side,
5. **Advanced Option** : You can change the language of the panel or set up whether or not you will show panel icon on the task bar on the bottom right side of desktop,
6. **INFORMATION** : You can check driver version, windows version, Direct X version and control panel version,
7. End the panel,



1. This is analog speaker set up menu,
2. This is analog speaker set up menu volume,
3. **Front** : Adjust front speaker volume,
4. **C/LFE** : Adjust C/W(center/woofer) speaker volume,
5. **Side** : Adjust Rear speaker volume,
6. You can set up whether you adjust right/left volume at the same time or separately,

# Description of Control Panel Menu



1. This is channel set up and speaker test menu.
2. You can change speaker channel according to configuration of your speakers. (If your speaker is 4 channel, you can set at 6 channel.)
3. **Enable Stereo Expander** : Please use this feature to expand 2channel signal to 5,1 channel.

## \* References when enjoying 5.1 channel sound.

You can use Stereo Expander feature when you playback music or videos, not 5,1channel movies, and want to enjoy them as 5,1 channel. This feature is available only with analog output, not with digital output. If you want to playback 5,1 channel using digital output, you can use surround function like Dolby pro logic feature which is in-built in your digital speaker or receiver, or you can set Passthrough output set up when you playback AC3, DTS format 5,1 video.(This is to send digital audio data through receiver as 5,1 channel digital source itself when playing-back 5,1 channel video). Please refer to FAQ in the Customer Support of our website for Passthrough set-up.

4. **TEST** : Speaker is tested automatically. (Testing is available only with 5,1 channel analog speaker. In case of 5,1 channel digital speakers, please check after Passthrough output set-up using AC3, DTS format 5,1 channel video file.)
5. **Speaker Options** : You can set up whether you will use the speaker or not according to the configuration of the speakers you will actually use.
6. Different speaker configurations are shown according to the channel set-up.



1. **Default Format** : Set up Sample rate value and Bit Depth.
2. **Sample Rate** : Set up Sample rate of analog output.
3. **Bit Depth** : Set up Bit Depth of Analog output.

# Description of Control Panel Menu



1. **QSound NanoQ Effects** : Use of QSound function and set-up can be changed.  
\*QSound function can be used with Windows VISTA, 7 only.
2. **QSound Enable** : QSound virtual surround function is activated.

**QXEnable** : This is to activate 2 channel virtual surround function, which centralizes the phase of the stereo output or expand it to make the feeling of spaciousness.

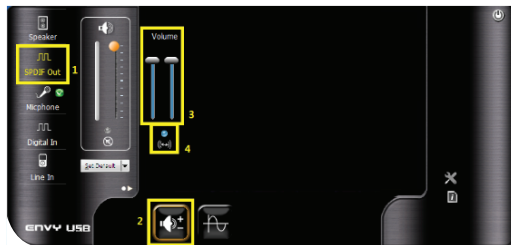
**Headphone** : This will make the QX function suitable for headphone and make set-up of spacious feeling.

**QSizzle Enable** : This emphasizes high tone, dynamic spectrum.

**QRumble Enable** : This emphasizes low tone, dynamic spectrum.

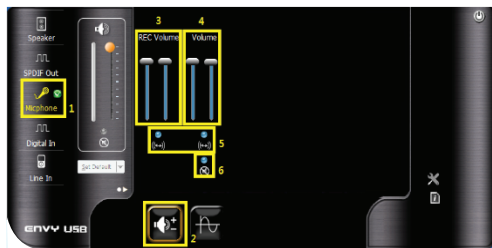
3. **EQ Enable** : This activates EQ application.

\*Frequency of 125Hz~8kHz range can be adjusted. High Hz range means high tone, and low Hz range means low tone. You can enjoy ample sound by adjusting it according to your speaker. But please be noted that the sound can be distorted if you raise it too much.



1. **SPDIF Out** : Set-up Menu for digital output
2. **Volume Control** : Volume Adjust Menu for digital output
3. This will adjust digital output volume.
4. You can set-up whether you will adjust right/left volume at the same time or separately.

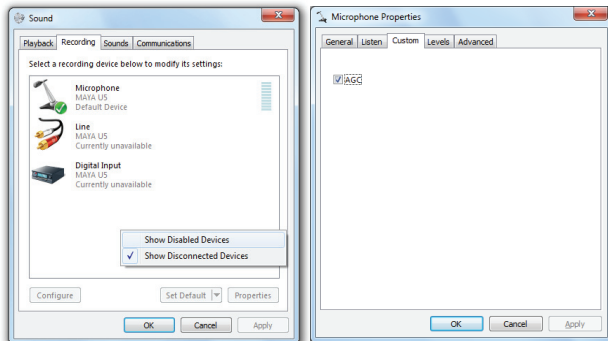
# Description of Control Panel Menu



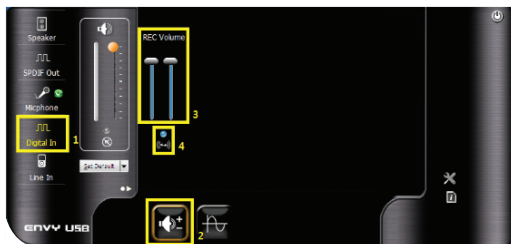
1. **Micphone** : Microphone set-up menu
2. **Volume Control** : Microphone volume adjust menu
3. **REC Volume** : This will adjust microphone input volume,
4. **Volume** : This will adjust microphone monitor volume, (This is to adjust microphone sound volume from speaker when using microphone, For adjusting recoding sound volume, please use REC Volume)

5. You can set-up whether you will adjust right/left volume at the same time or separately.
6. **Mute** : Mute the microphone function, (\*\*You are recommended to set Mute to block noise and get better sound output when the microphone is not used.\*\*)

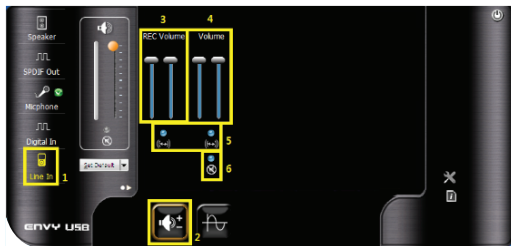
\*\*If you open Recording Device by clicking speaker on the task bar with the right button of the mouse, you can make following set-up for +30dB amplification. \*\*



# Description of Control Panel Menu



1. **Digital In** : Digital In set-up Menu
2. **Volume Control** : Volume adjust menu of Digital In,
3. **REC Volume** : This adjust digital Input volume,
4. You can set-up whether you will adjust right/left volume at the same time or separately,



1. **Line In** : Line In Set-up Menu
2. **Volume Control** : Line In volume adjust menu when using external stereo output equipments,
3. **REC Volume** : This adjust Line In input volume,
4. **Volume** : This adjust Line In monitor Volume,
5. You can set-up whether you will adjust right/left volume at the same time or separately,

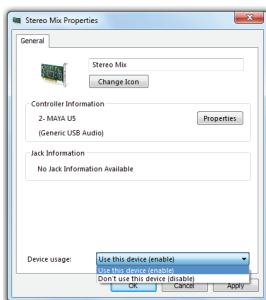
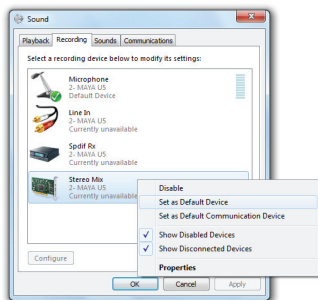
6. **Mute** : Mute the Line In function. (\*\*You are recommended to set Mute to block noise and get better sound output when Line In is not used.\*\*)



# Description of Control Panel Menu

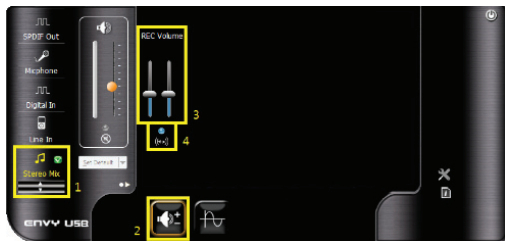
## How to use Stereo Mix Function

If you open Recording Device by clicking speaker on the task bar in the bottom-right side of desktop with the right button of the mouse or if you go to Record in the Sound Menu of Control Panel, press right button of mouse and check on the Not-usable device, and then, click Stereo Mix with the right button of mouse and set Use as below pictures.



Setting-up as above, you can get arrow menu on the panel as shown in the left.

If you press the arrow mark, stereo mix menu is shown.



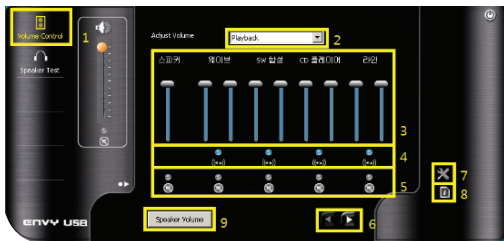
1. **Stereo Mix** : Stereo Mix set-up menu.
2. **Volume Control** : Volume Adjust Menu.
3. **REC Volume** : This adjust Stereo Mix Volume.

\* If you set the volume at Max when adjusting stereo mix volume, the sound is amplified more than the current level, Optimum volume is

around 40, but you can adjust the volume properly during internet broadcasting and recording. So please adjust the volume properly.

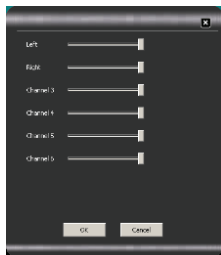
# Description of Control Panel Menu

## [Menu Description of Control Panel for Windows XP]



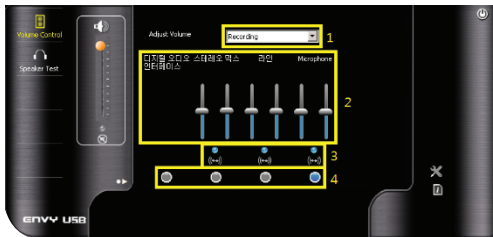
1. **Volume Control** : Set-up Menu for Output volume,
2. **Playback** : This adjusts output volume of each source,
3. You can adjust the level of various sources on the speaker or headphone. You can adjust the listening sound through speaker at the time of Microphone Input or Line In Input,

4. You can set-up whether you will adjust right /left volume at the same time or separately.
5. You can mute the sound of each source.  
(When you can not hear the sound of microphone or Line In on the speaker when connecting microphone or Line In, please check whether or not mute is set for the source in Playback menu.)
6. If you press the arrow on the side, you can see microphone source.  
(\*\*You are recommended to set Mute to block noise and get better sound output when the microphone and Line In is not used, \*\*)
7. **Advanced Option** : You can change the language of the panel or can set whether or not the panel icon will be shown on the task bar in the bottom-right side of the desktop.
8. **INFORMATION** : You can check the driver version, windows version, Direct X version, control panel version and etc.
9. You can adjust the speaker volume when using multichannel speaker like 5,1 channel speaker as below pictures,



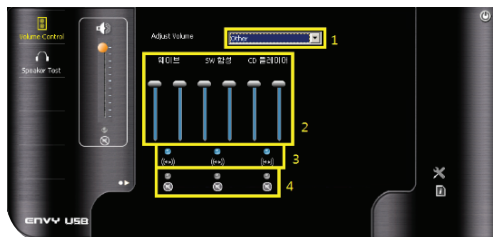
- Left** : Controls volume of front left speaker,  
**Right** : Controls volume of front right speaker,  
**Channel3** : Controls volume of center speaker  
**Channel4** : Controls volume of woofer speaker  
**Channel5** : Controls volume of rear left speaker  
**Channel6** : Controls volume of rear right speaker

# Description of Control Panel Menu



1. **Recording** : Recording Set-up Menu
2. **Digital Audio Interface** : You can use this function when recording digital input source.  
**Stereo Mix** : You can use this function when recording windows internal sound and Line In sound or Microphone Input together.  
**Line** : You can use this function when recording the sound of external stereo equipments like CDP, MP3P and etc.  
**Microphone** : You can use this function at the time of Microphone recording.

3. You can set-up whether you will adjust right/left volume at the same time or separately.
4. You can select the source to be recorded.

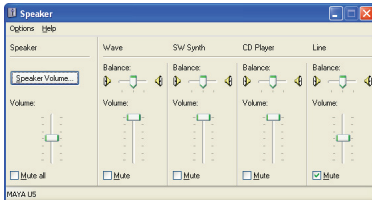


1. **Other** : You can adjust volume of each source,
2. You can adjust the volume of Wave, SW synthesis, CD player.
3. You can set-up whether you will adjust right/left volume at the same time or separately.
4. You can mute each source.

# Description of Control Panel Menu

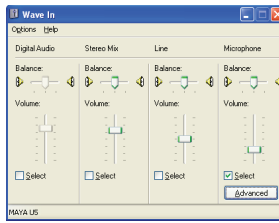
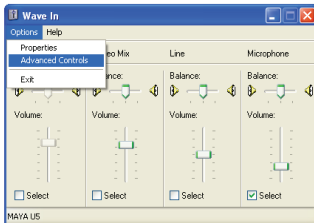
\*Belows are Basic volume control panel of Windows XP.\*

(If you check Advanced Control in Option, you can see the Advanced Menu in the Microphone as belows.)



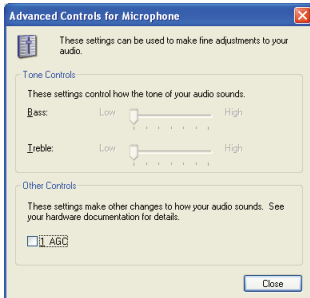
The panel when you select  
Option->Character->Playback

1. **Speaker Volume** : You can adjust each speaker volume when using multi-channel speaker.
2. You can amplify the level of microphone input.



The Panel when you select  
Option -> Character  
-> Record

If you press Advanced  
Menu of the above panel,  
the menus as the below  
pictures are activated.



If you select AGC(Amplifier Gain Control) as the above  
pictures, you can get raised microphone volume of +30dB.

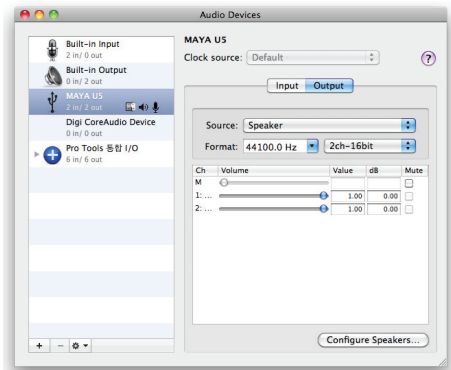
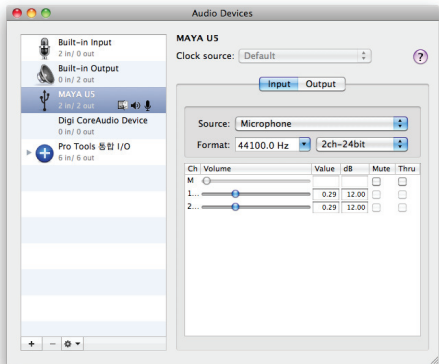
# Description of Control Panel Menu

**\*When using MAYA U5 with Mac OS X**

You can use this by just connecting USB without specific driver installation.

※ We don't offer extra drivers.

You can make detailed set-up of input/output on the panel as below pictures.

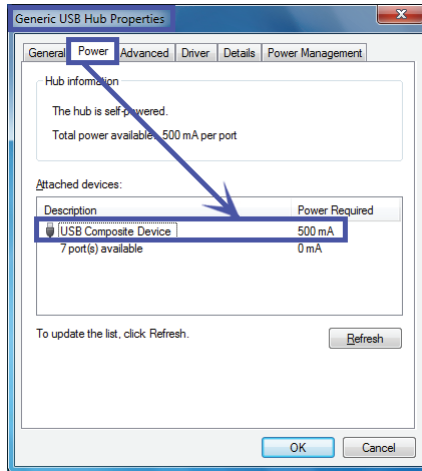


# Cautions to Use

- When set to output 5,1-channel 24bit, input must be set to 16bit. (If set the input to 24bit, USB bandwidth is exceed so can not work normally.)
  - If keyboard, mouse or other device with MAYA U5 connected to the same USB HUB, USB bandwidth is reduced. So maximum performance and functions to restrictions and may occur an error, Recommend to using Move your USB PORT, and USB HUB connected to the exclusively,
- \* To confirm the USB HUB connection status, you can check at

**Control Panel -> Device Manager-> Universal Serial Bus controllers.**

('USB Composite Device' is connected devices name of the MAYA U5.)



(This is a picture taken in Intel chip sets/Windows 7. If this is AMD chip sets or Windows XP/VISTA, this picture can vary, But they are little different.)

# System Requirements / Specification

## ■ System Requirements

|     |  |
|-----|--|
| USB | Desktop or notebook computer with USB port of Rev. 1.1/2.0 compatiblePentium 4 |
| CPU | 1.8G or higher   |
| RAM | 512MB or higher  |
| OS  | Windows XP/VISTA/7, Mac OS X   |

## ■ Specification

|                     |  |
|---------------------|--|
| Interface           | USB interface (1.1/2.0 compatible)   |
| Analog Input        | MIC Input(+30dB Amplification Function) and Line Input(3.5mm Stereo Mini)  |
| Analog Output       | 5.1 Channel(Front,Center/Woofers,Rear) Speaker Output (3.5mm Stereo Mini)<br>Headphone Output (3.5mm Stereo Mini)                  |
| Dynamic Range       | DAC SNR 110dB, ADC SNR 100dB   |
| Digital Output/Way  | Optical / PCM, AC3 PassThrough (Supporting Windows XP/VISTA/7)   |
| Digital Input/Way   | Optical / PCM  |
| Supported Frequency | 16bit/24bit, 44.1kHz/48kHz (Support maximum 24bit/48kHz )<br>※ Set-up of 24bit in Windows 7 can be done after driver installation. |
| Power Supply        | USB bus power  |
| OS                  | Windows XP/VISTA/7, Mac OS X   |
| Dimension/Weight    | 100mm(W) X 60mm(D) X 20mm(H) / 80g   |

# Service Guide

- Two year limited warranty for free from the date of your purchase is applicable.
- The date of purchase is referred to the dated itemized receipt. If proof of receipt is not possible, the date of the purchase is estimated from product manufactured date.
- The limited warranty is only applicable for free in case of normal usage during warranty period. Any failure or damage of the product by natural disaster (lightening, fire, flooding, etc.), remodeling, and carelessness or mistakes of user even if during the warranty period.
- Visit our Customer support Center for A/S during the warranty period or use parcel services.
- For more information about product and technical support, please feel free to visit our website and go to Q&A board to be supported.
- Service Center  
#640 Joan Sibeom Gongdan, 17-1 Joan-Dong, Nam-Gu, Incheon, Korea  
Tel, 82-32-8769481
- Website : [www.audiotrack.net](http://www.audiotrack.net) Email : [support@audiotrack.net](mailto:support@audiotrack.net)

"MAYA" AUDIOTRAK are trademarks  
of GYROCOM C&C Co., LTD.



© 2011 GYROCOM C&C Co., LTD. All rights reserved.  
AUDIOTRAK, the AUDIOTRAK logo, PRODIGY, imAmp, MAYA  
and DR.DAC are trademarks of GYROCOM C&C Co., LTD.  
registered in the South of Korea and other countries.  
Other company and product names mentioned herein may  
be trademarks of their respective companies.

30-9410-GYR  
Made in KOREA





High Quality DAC SNR 110dB  
Multi-media 5.1 channel USB SoundCard

**MAYA U5**



Copyright © 2011 GYROCOM C&C Co., LTD All rights reserved.