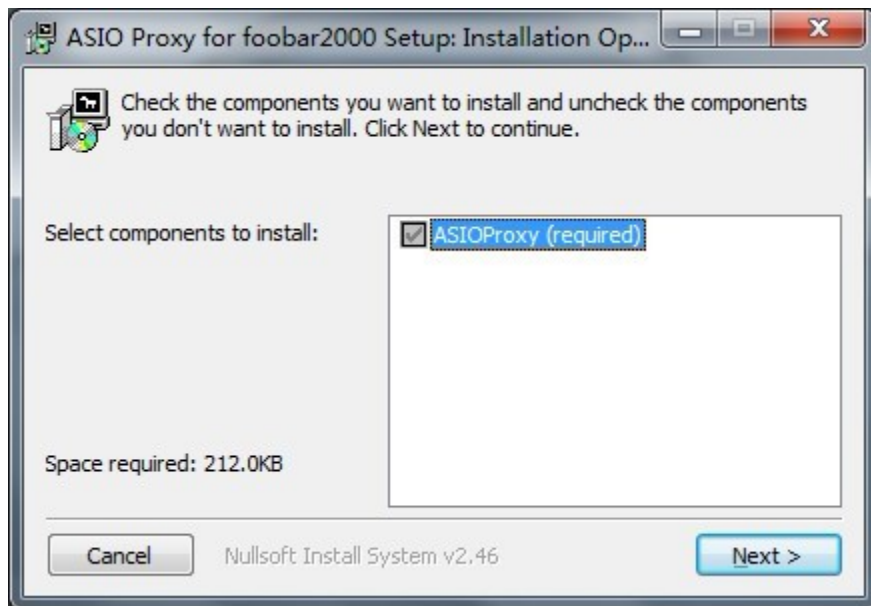


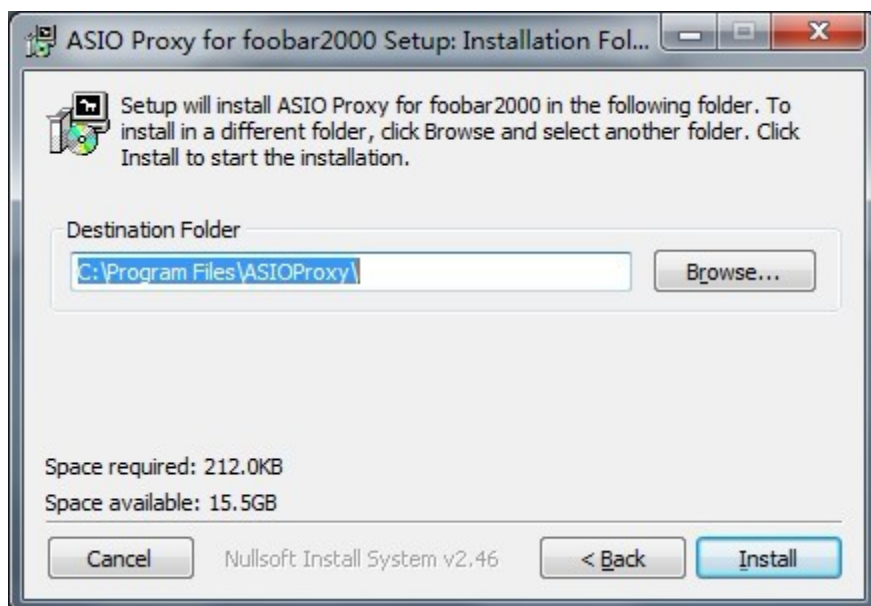
# Setting the DSD signal out on Foobar2000

## 1. Install the ASIO Proxy

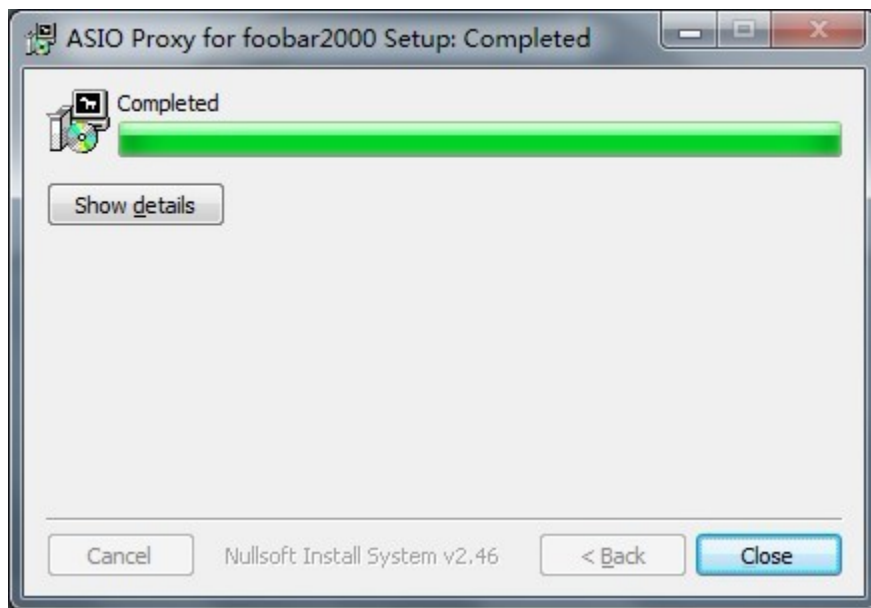
- a) Double click the "ASIOProxyInstall-0.6.0.exe" in the DSD components folder ,and click "Next".



- b) Choose the install location.

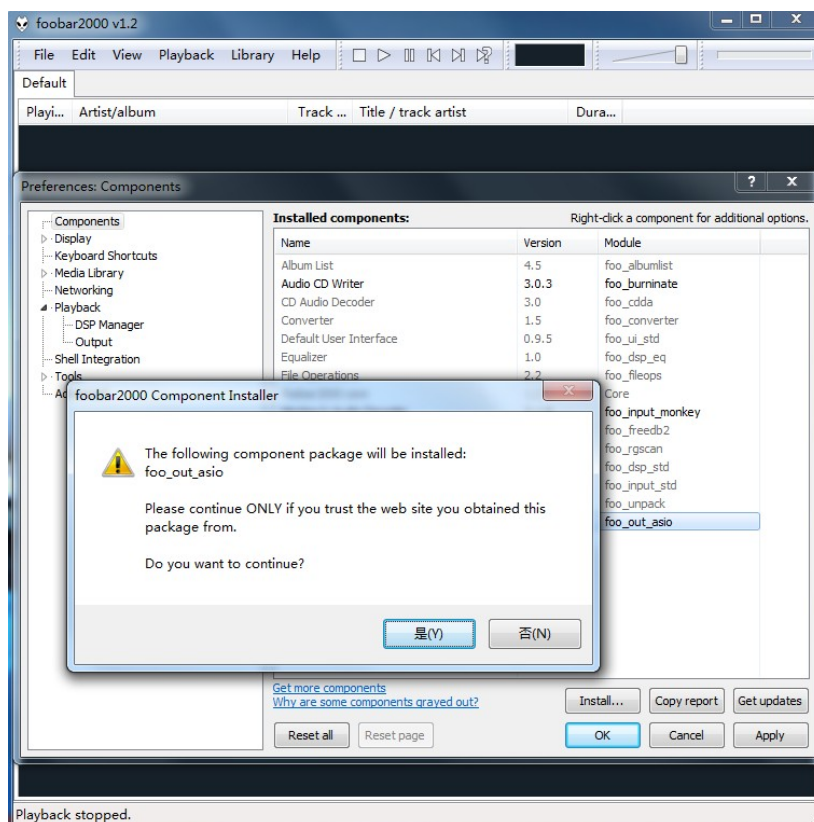


c) Installation complete, and click the "Close".

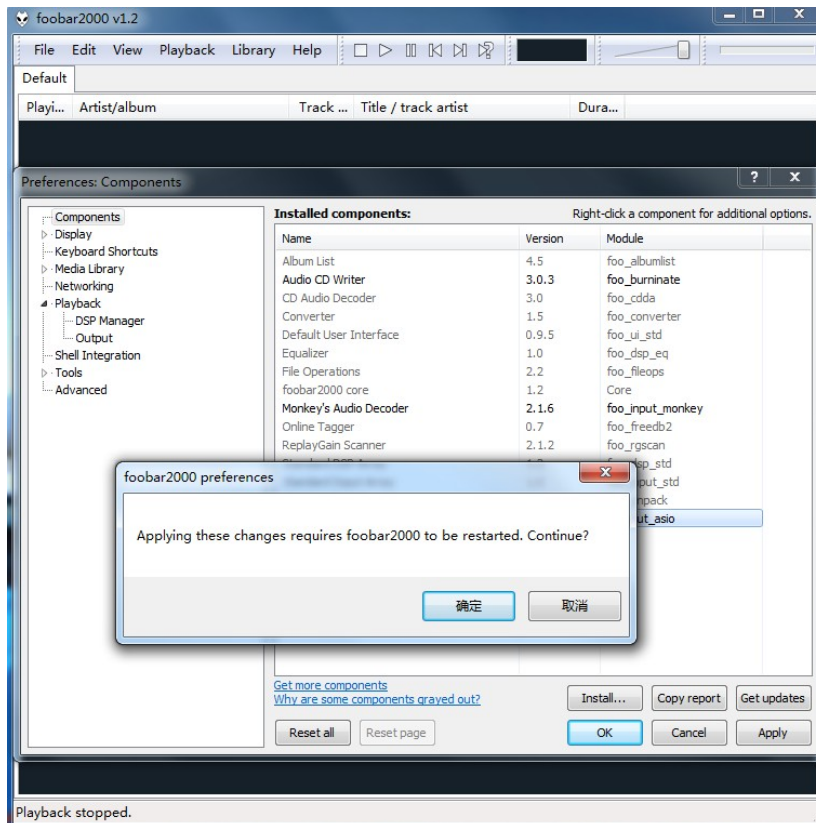


## 2. Install the ASIO component

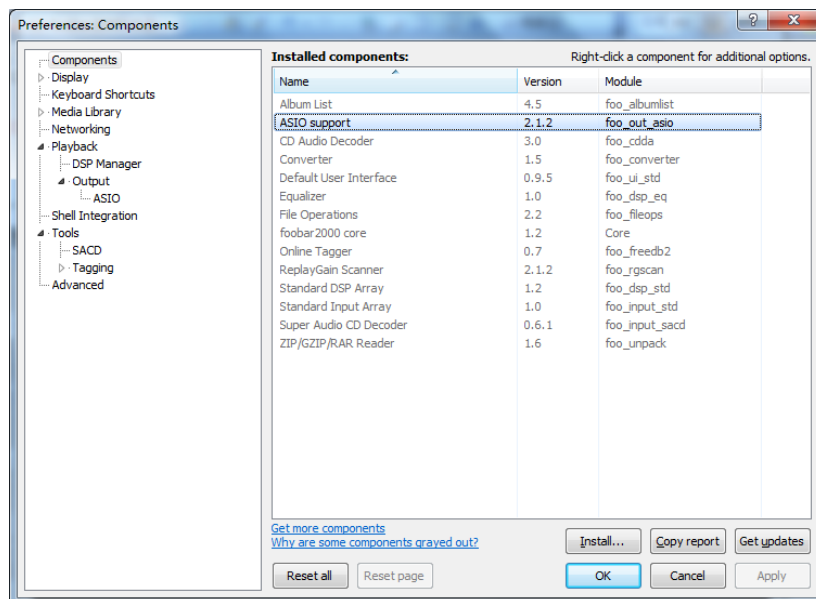
a) Double click the "foo\_out\_asio.fb2k-comonent" in the ASIO components folder, and click "Y".



b) Choose "YES" to complete the ASIO component Installation.

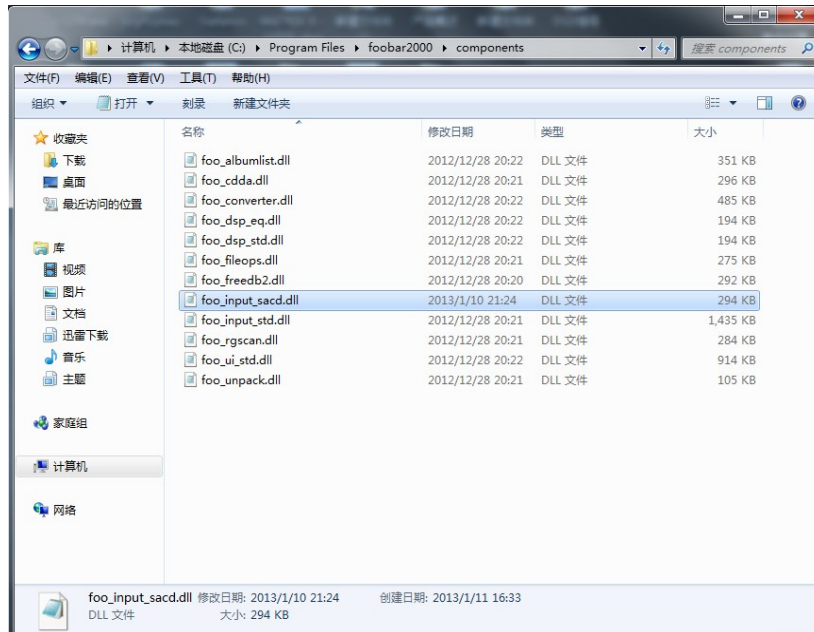


c) Restart the Foobar2000, go to Files→Preference→Components, and check whether the "ASIO support" is already existed, in order to ensure that is the correct installation.

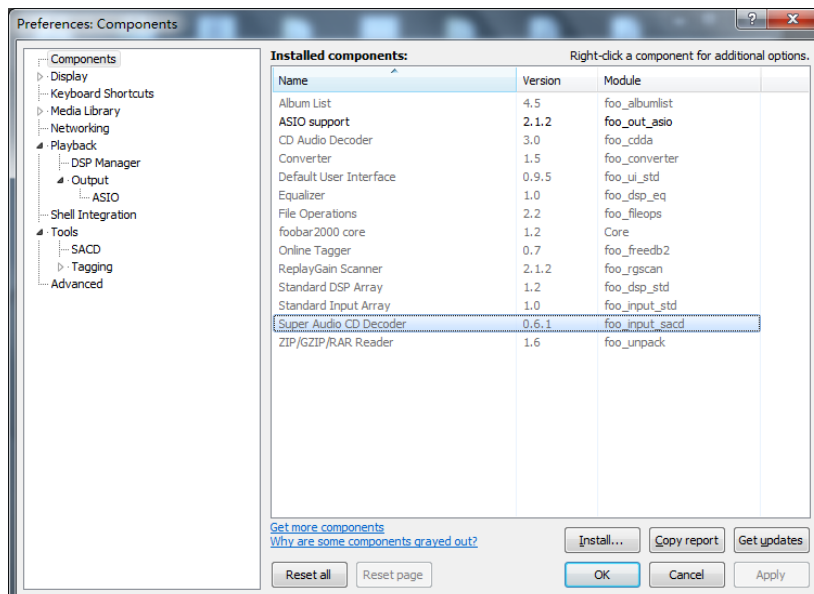


### 3. Install the SACD component

- a) Copy the "foo\_input\_sacd.dll" file from the DSD components folder to the components folder of the Foobar2000 root directory.

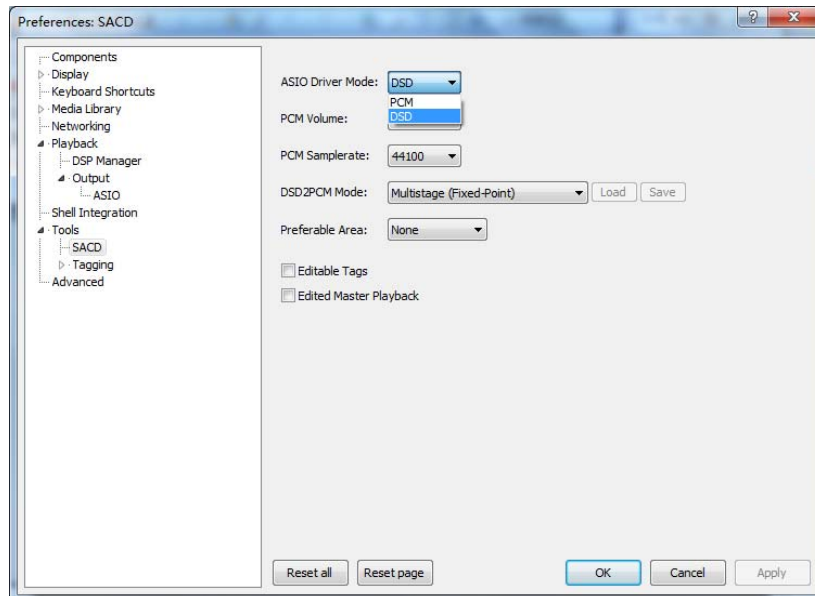


- b) Restart the Foobar2000, go to Files→Preference→Components, and check whether the "Super Audio CD Decoder" is already existed, in order to ensure that is the correct installation.

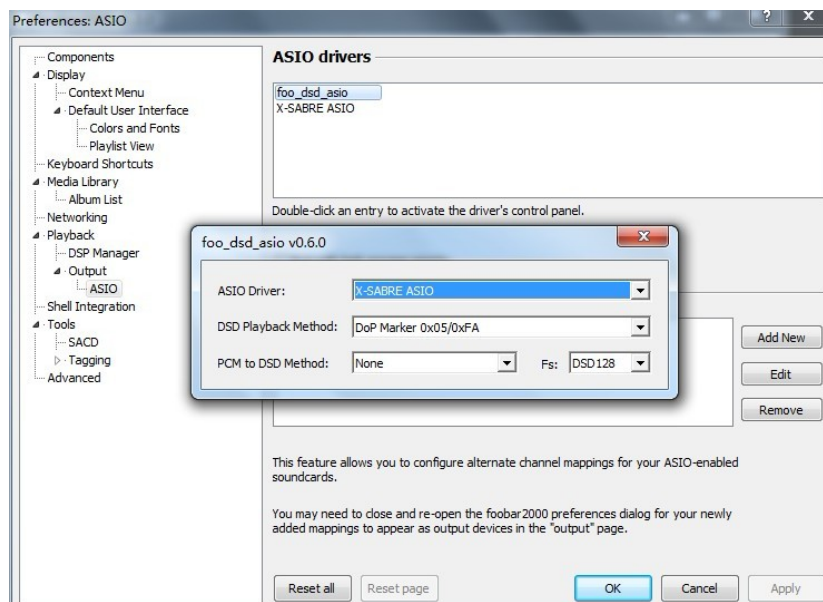


## 4. Components Configuration

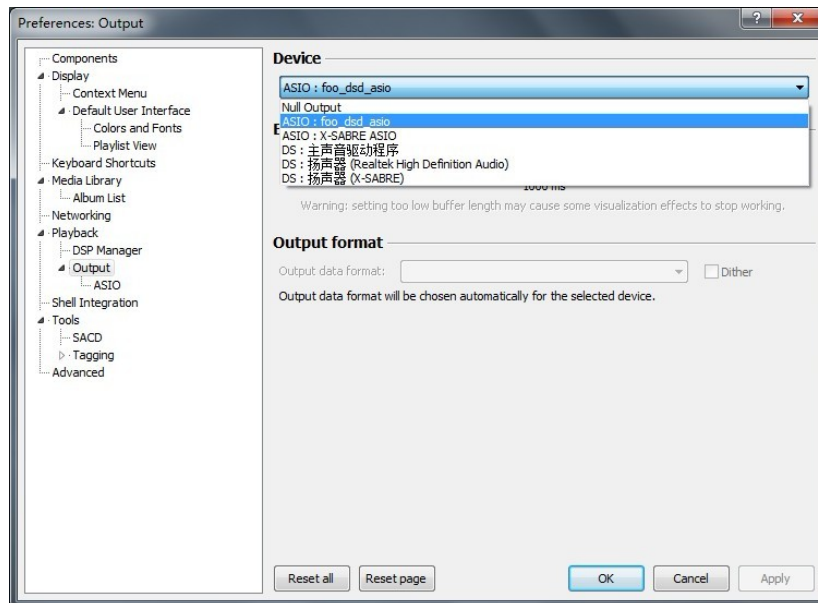
- a) Go to Files→Preference→Tools→SACD, change the "ASIO Driver Mode" as "DSD", other settings keep default.



- b) Go to Files→Preference→Output→ASIO, double click the "foo\_DSD\_asio", change the "ASIO Driver" as the "X-SABRE ASIO"; Change the "DSD Playback Method" as the "Dop Marker 0x05/0xFA"; Change the "PCM to DSD Method" as the "None"; Change the "Fs" as the "DSD128".



- c) Go to Files→Preference→Output→Device, choose the "ASIO:foo\_dsd\_asio", and click the "OK" to complete the setting of the DSD signal output.



## 5. Configuration Complete

- a) After the correct setting, the Foobar2000 can direct output the DSD signal normally.
- a) Please make sure that the X-SABRE system volume have been set to maximum, otherwise it will affect the DSD signal output.
- b) Please check the DSD indicator light whether it is light up. If it can normally playback, but the DSD indicator light is not light up, and the PCM indicator light has been light up, so the it is still work in the PCM mode, please check your above configuration.